

# Alpha Delta Kappa

## California Connects

### Honor, Nurture, Support, Flourish

VOLUME 1

February 2021

ISSUE 3

#### PRESIDENT'S MESSAGE

Dear California Sisters,

I want to give all the working educators, parents, grandparents, and all sisters a shout-out for working so hard during this Covid-19 madness. Most of us are tired, frustrated, maybe even disappointed in our efforts, but we are all trying to help our students, families and friends stay connected. As Alpha Delta Kappa members, we are still plugging away on Zoom meetings, participating in philanthropic endeavors, and raising funds for those in need, as well as recognizing educational efforts.

We are still sleeping and waking up. Although many have lost family and friends throughout the year, we are still standing and doing our share. We are showing up to meet the daily challenges and we all are doing the best we are able. We keep smiling, trying, and pushing forward.

Please do not forget to treat yourself with kindness. It is by giving that we receive, but giving to one's self is equally as important. Take care, and even pamper yourself. All of us have gone through difficult times, but everyone deserve time alone to refuel and recharge. Even take your worries outside.

I pray that today and every day is full of success, blessings (both large and small), friends who believe in you, and the reminder that as educators, we impact children's lives whether we are in the classroom setting or not. Let us be grateful for what we have and learn from our mistakes. Please know that you are appreciated far more than you can imagine.

With a grateful heart and sincere thanks,

Sara Cooper  
2020-2022 President





## Calendar Updates **FORGET ME NOT DUE DATES**

- Mar 01 **Making the World Better Initiative** deadline
- Volunteer** Applications for **International Committees** deadline (2<sup>nd</sup> round)
- Mar 15 **Chapter Altruistic Report** are due to State Altruistic Chairmen  
**Northern and Valley** Chapters send them to **Peggy Berner Marina and Southern** Chapters send them to **Melanie Chant**  
NOTE: The Altruistic period = March 2020 - Feb 2021
- Apr 01 **KAPPAN** deadline (June publication)
- Apr 15 **Newsletter** deadline (send articles to [adk.sara.ooper@gmail.com](mailto:adk.sara.ooper@gmail.com))  
*Subject line* should say "NEWSLETTER"
- Regional Mini-Scholarship** deadline
- Early Bird Registration** for **International Convention** deadline
- 15 **Registration for Internattional Convention** deadline
- 20 **"The Longest Day"** for Alzheimer's Association
- 30 **Chapter Needs Assessment (CNA)** deadline
- Apr 30 **Membership Campaign** ends
- Jun 01 **World Understanding Project Voting** begins
- 30 **World Understanding Project Voting** ends
- Jul 01 **KAPPAN** Submissions deadline (September publication)
- Jul 5 **International Convention, Leadership Academy and**  
-16 **Educational Symposium**



### PLAN AHEAD - Start saving those pennies for 2022. You'll want to travel by then!

- May 13-15, 2022 California State Convention - DoubleTree Inn - San Jose, CA
- Aug 02-05, 2022 Northwest/Southwest Regional Conference, Honolulu, Hi

Change is in the air



# Honor, Support, Nurture, then Flourish

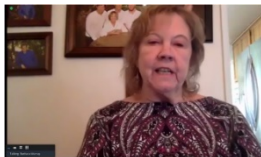
## CA Proud of Councils Hosting District Conferences

### Marina District Channel Islands

### Coming on March 13th Southern District San Diego



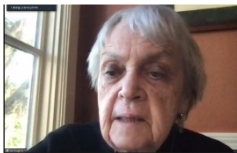
### Marina



Barbara Murray



Nancy Dorey



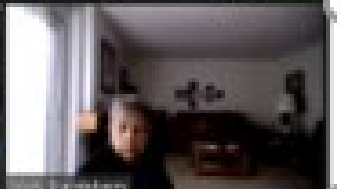
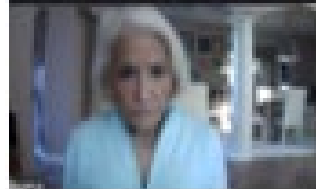
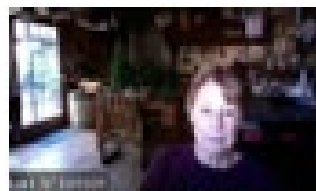
Joanne Grimm



Sherry Bronow



### Southern District



# CA Proud Of The Alpha Delta Kappa Chapters



**Beta Iota**  
(Judy Remele)



Beta Iota invites you to:



A presentation of Suzy's Zoo characters  
by creator:

Suzy Spafford

Date: Feb. 1<sup>st</sup>

Time: 6:00 p.m.

Zoom meeting: to receive  
your Zoom link reply to Judy Remele by Jan. 27<sup>th</sup>

[jaremele101@gmail.com](mailto:jaremele101@gmail.com)



**Suzy and her creator Suzy Spafford  
Lidstrom**



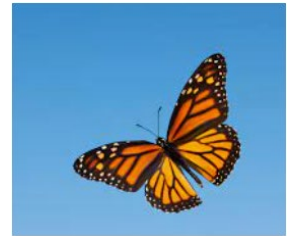


## Gamma Lambda

(Carole Freethy, Co-President)

### California Gamma Lambda's Monarch Butterfly Project:

Our chapter, Gamma Lambda, decided to enter into an environmental project we could do at home and would benefit the local Monarch Butterfly population. The cost is minimal and the work is too. The Monarch has had a 97% decline since 1980 due mostly to loss of milkweed habitat. This loss is due to pesticides, climate change, urban sprawl etc. Very sad! Our chapter had a gentleman from our local nursey talk to us at one of our meetings (on zoom of course) and give us the necessary information we needed to proceed with th e project. He told us milkweed is easy to grow. Remember it's a weed and it's deer resistant. Basically, we are increasing the habitat by planting native milkweed which attracts the adult butterfly to lay her eggs; the only plant the monarch caterpillar will eat, therefore, the only plant on which the butterfly will lay her eggs. The baby caterpillar hatches and eats the milkweed (only milkweed) until it turns into a chrysalis and eventually emerges into a butterfly. This is a win win project as the butterfly is also a pollinator. We will start planting in February to March. Also, it's necessary to plant a few other flowering plants that provide the nectar for the adult butterfly. Hopefully our story of planting native milkweed will inspire you in joining us in our effort to save the Monarch.



## CA Proud Of Our Altruistic Endeavors

### Alpha Delta, Redlands (Amy Scullin)

For years, Alpha Delta has held a fashion show at the University of Redlands. It was our only fundraiser of the year and brought in scholarship money galore.

With the pandemic, we switched it up and supported a brand new shop in our town. They gave us 50% of the money, and all we did was send out flyer and stand and deliver the boxes as people drove through the line. The best thing about this is that we brought in the same amount of money!



### International Vice President for the Southwest

Kitty Nutting, the Southwest IVP, sent us all a Valentine's Day greeting. February was filled with love and adoration for many!



**Beta Kappa, Newark  
Christine Muktarian**

**(submitted by Anne Radford)**

Altruistic projects go on throughout the year for California Beta Kappa. During the year we contact our local charity organization, the Viola Blythe Center in Newark, California to find out how we can be of help. Photo 1 shows Beta Kappa sisters, l to r, Catherine Scheving, Polly Anderson, and Anne Radford, at Viola Blythe delivering a trunk-full of Thanksgiving groceries donated by Beta Kappa sisters. Our yearly altruistic project at Christmas time is to sponsor a local needy family through the Viola Blythe Center. Photo 2 shows Beta Kappa member Lesley Wakefield and her family at the Viola Blythe Center wrapping Christmas presents donated by Beta Kappa and other local organizations. Our sponsored family was a large one: young parents with 5 children under the age of 12. Beta Kappa gave presents that fulfilled the wishes and needs of the parents and their 5 children. We were given info of those wishes from Viola Blythe, and then we went shopping. In January we learned that Viola Blythe was in need of sleeping bags, gloves, and socks for homeless people in our area. Beta Kappa sisters sprang into action to provide those needs. In Photo 3 Beta Kappa sisters Anne Radford and Judy Pino are dropping off sleeping bags, blankets, socks, & gloves at Viola Blythe Center in Newark. Helping our neighbors in need is a high priority with Beta Kappa ADK.



## CA Proud of all the Altruistic Endeavors Outside Our Chapters

Watch for additional information on all of these  
altruistic projects.

### This is Our *California State* Altruistic Project

**New Day for Children** provides funding for America sex trafficked girls. This support goes a long way to provide a variety of needed services including education, restorative care, and therapy. New Day's assistance gives her access to safety and the help she needs to recover her stolen childhood, while building her self-esteem and confidence.



### These are AΔK's *International* Altruistic Projects



**St. Jude Children's Research Hospital -**  
For more than 30 years, Alpha Delta Kappa has supported [St. Jude Children's Research Hospital](#) in its lifesaving mission: Finding cures. Saving children.

## alzheimer's association®

### Alzheimer's Association

We are the Alzheimer's Association and our vision is a world without Alzheimer's and all other dementia®.

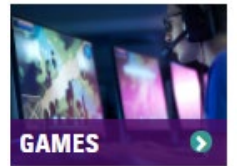


Purple is our signature color, combining the calm stability of blue and the passionate energy of red.



# California Proud of Alpha Delta Kappa's Ongoing Activities

June



July

**NOTE: March 21<sup>st</sup> is World Down Syndrome Day**

## 2021 INTERNATIONAL CONVENTION

July 5-16, 2021

*Pathways  
of Possibilities*



**SAVE THE DATE!** Mark your calendars for July 5-16, 2021, and plan to attend the 2021 Alpha Delta Kappa Virtual International Convention! Check your eblasts and the AΔK website for up-to-the-minute information.

### SCHEDULE INFORMATION

- July 5: Regional Membership Seminars (Monday)
- July 6-9: Educational Symposium (Tuesday-Friday)
- July 12: Pre-Convention Meetings (Monday)
- July 13-16: International Convention (Tuesday-Friday)

### DAILY SCHEDULE JULY 13-16

- Two 2-hour sessions with a 1-hour break
- First Session 1 p.m.-3 p.m. ET
  - BREAK
  - Second Session 4 p.m.-6 p.m. ET (Tuesday, Wednesday, Thursday)
  - Second Session 3 p.m.-5 p.m. ET (Friday)

### SPECIAL SESSIONS

- EVENING OF ENTERTAINMENT Thursday, July 15 7 p.m. ET
- MEMORIAL SERVICE Friday, July 16 1 p.m. ET
- INSTALLATION OF OFFICERS Friday, July 16 7 p.m. ET

### STARTING TIMES IN OTHER TIME ZONES

- 7 a.m. Honolulu (no DST)
- 10 a.m. Pacific (DST)
- 11 a.m. Mountain (DST)
- 12 p.m. Central (DST)
- 1 p.m. Eastern (DST)
- 2 p.m. San Juan (DST)
- 4 a.m. the next day in Brisbane (DST)
- 5 a.m. the next day in Melbourne (DST)



## Down Syndrome Association of Central Texas

Our International President Judy Ganzert has chosen the Down Syndrome Association of Central Texas (DSACT) to be our 2021 International Convention Altruistic Project. Contributions for this project may be made online.

